

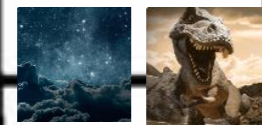
Art and design subject pathway



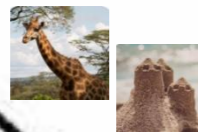
Me and my community, Once upon a time, Starry night, Dangerous dinosaurs, Sunshine and flowers and Big wide world.

Creating with materials; Being imaginative and expressive

Nursery



Reception



Mix it
Colour theory; Colour wheel; Primary and secondary colours
Funny faces and fabulous features
Portraiture; Collage

Rain and sunrays
Motifs; Line and shape; Texture; Collagraphy

Street view
3-D murals; Buildings; Significant people – James Rizzi

Contrast and complement

Colour theory; Colour wheel; Tertiary colours; Warm and cool colours; Complementary colours; Analogous colours

Prehistoric pots

Significant people – Bell Beaker culture; Sketching; Clay techniques; Making Bell Beaker-style pots

Ammonite

Sculpture

People and places

Figure drawing; Urban landscapes; Significant artist – LS Lowry

Beautiful botanicals

Weaving with natural materials; Botanical art and illustration; Observational drawing; Unit and lino printing; Botanical study

Mosaic masters

History of mosaics; Sketching; Mosaics

Mix it

Colour theory; Colour wheel; Primary and secondary colours

Still life

Still life; Colour study; Compositions

Flower head

Analysing artwork; Exploring visual elements – colour, shape, form, texture and pattern; Significant artist – Yayoi Kusama; Drawing; Printmaking; 3-D forms

Portraits and poses

Portraiture; Royal portraits; Sketching; Digital artwork

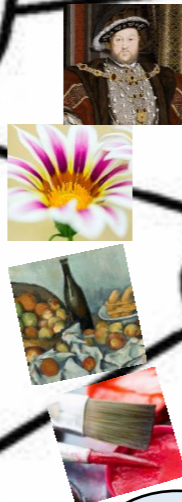
Year 1



Year 3



Year 2



Year 4



Year 5



Year 6



Contrast and complement Colour theory; Colour wheel; Tertiary colours; Warm and cool colours; Complementary colours; Analogous colours

Warp and weft Weaving; Exploring yarns

Vista Landscape; Perspective

Animal Significance of animals in art; Drawing; Printing; Clay sculpture

Islamic art Features of Islamic art; Motifs and patterns; High and low relief clay sculpture

Statues and figurines Figure drawing; Statues, statuettes and figurines; Sculptures from ancient civilisations; Clay work and sculpting

Tints, tones and shades

Colour theory; Colour wheel; Mixing tints, shades and tones; Landscapes

Taotie

Taotie motifs; Casting methods; Watercolour

Lines, light and shadows

Continuous line drawing; Significant artists – Pablo Picasso and Rembrandt; Shading techniques; Drawing on black paper; Black and white photograph

Nature's art

Land art; Natural materials; Relief sculpture; Installations

Mixed media Paper crafts; Papermaking; Paper, fabric, mixed media and surreal photo collage; Mixed media artwork

Expression Expressionist art movement; Significant artist – Edvard Munch; Portrait photography; Expression; Self-portraits

Tints, tones and shades Colour theory; Colour wheel; Mixing tints, shades and tones; Landscapes

Trailblazers and barrier breakers Significant black artists; Analysing artwork; Creating artwork with meaning

huit

Printmaking; Carving

Environmental artists

Environmental art; Recycled, reused and repurposed materials

Distortion and abstraction

Abstract art; Abstraction by line, colour and shape; Significant artists – Pablo Picasso, Robert Delaunay and Sonia Delaunay; Orphism

Bees, Beetles and butterflies

Using sketchbooks; Observational drawing; Mixed media collage; Pop Art

Art Week- The natural world

EYFS- Y4-
Y1 - Y5-
Y2 - Y6-
Y3 -