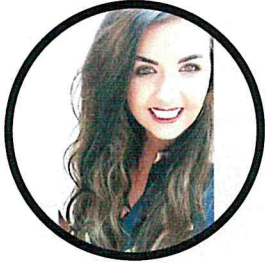




Bushbury Lane Academy Newsletter



Website: www.bushburylaneacademy.co.uk Email: office@bushburylaneacademy.co.uk Tel: 01902 556 486



A Note from Miss Smith

What a wonderful start to the year we have had. The children are settling back into routines (including many new ones) and are well under way with their learning. This year will be a challenge for us all as we work hard to catch the children up on lost learning time as well as ensuring any children who can't attend school are not adversely affected.

I want to take this opportunity to thank both parents and the team at Bushbury Lane for their vigilance and support during these first few weeks. We know lots of children have had to isolate at home when they have been unwell with some symptoms and parents have needed to arrange tests, but in doing so we can be proud that at no time during our first four weeks back have we had to close a bubble. We remain COVID free and open to all children, and very much hope this continues with the amazing support we have received from you all.

Important Dates

Tuesday 20 October	Flu vaccines for R-Y6
26—30 October	HALF TERM
Friday 23 October	Class Party Afternoon/ Halloween Dress Up
Tuesday 10 November	Reception 2021 Open Evening (<i>more information to follow</i>)
Friday 13 November	Children In Need
16 - 20 November	Anti Bullying Week
Wednesday 18 November	Nursery Open Evening for January Intake (<i>more information to follow</i>)
Friday 20 November	Autumn Term Reports out
23 - 27 November	Maths Week
Wednesday 25 November	Parents Evening (Zoom)
Thursday 26 November	Parents Evening (Zoom)
Tuesday 24 November	Reception 2021 Open Evening (<i>more information to follow</i>)
Friday 11 December	Christmas Jumper Day
Thursday 17 December	Christmas Lunch
Friday 18 December	Class Christmas Parties
21 December - 1 January	CHRISTMAS HOLIDAYS
Monday 4 January	INSET DAY
Tuesday 5 January	Children return to school



Wednesday, 14th October 2020



Bushbury Lane Academy Newsletter



Website: www.bushburylaneacademy.co.uk Email: office@bushburylaneacademy.co.uk Tel: 01902 556 486



We're having a party!

We, the staff at Bushbury Lane Academy, believe it's time for our children to let their hair down and enjoy a class party. We have all been working hard to catch up on a lot of lost learning and assess the children to see where they have gaps in their learning and we are so proud of how each and every one of your children have returned to school. This hard work will continue throughout the year but needs to be celebrated now.

On Friday 23rd October, children are asked to come to school in party gear/ Halloween costumes. Our Party will have somewhat of a Halloween Theme but we do understand many families don't celebrate Halloween and understandably won't dress up. The staff will be dressed up and ready to party with the children on this day.

Due to the last academic year being cut short, children didn't have an opportunity to play party games with their friends, watch a movie with popcorn or simply enjoy listening to music and chatting whilst eating some foods that wouldn't generally be offered in school.

We ask parents to send with their children some goodies for their class parties. Unfortunately, due to the current pandemic, we must ask for anything brought in to be packaged and closed over. Although we all love a good homemade treat, these will not be appropriate at the moment.



Wednesday, 14th October 2020



Bushbury Lane Academy Newsletter



Website: www.bushburylaneacademy.co.uk Email: office@bushburylaneacademy.co.uk Tel: 01902 556 486



Our First Day in Reception at Bushbury Lane Academy

Promise me you'll always remember:
You're braver than you believe, stronger
than you seem, and smarter
than you think.



You're off to
GREAT PLACES!
Today is
YOUR DAY!
Your mountain
IS WAITING
So...get on
YOUR WAY!

- DR SCUSS -



Bushbury Lane Academy Newsletter



Website: www.bushburylaneacademy.co.uk Email: office@bushburylaneacademy.co.uk Tel: 01902 556 486

Curriculum News

The Cornerstones curriculum that we have implemented at Bushbury Lane Academy runs from Nursery to Year 6 and is used to primarily teach Science, Geography, History, Art and Design Technology. The curriculum is delivered through cross-curricular imaginative and knowledge rich 'projects' that aim to inspire and excite children with a range of rich and memorable learning experiences. The children go on a learning adventure which develops their subject knowledge from their initial project launch experience to the project finale. We believe children learn better when they are encouraged to use their imagination and apply their learning to engaging contexts. Our curriculum provides many learning challenges throughout the academic year that require children to solve problems, apply themselves creatively and express their knowledge and understanding effectively. Cornerstones also provide a rigorous skills and knowledge framework that outlines the end of year expectations in all subjects. These skills and knowledge are tied to activities and are age-related so that staff can track children's progress and identify their individual learning needs.

Our Curriculum Projects This Year:

	Autumn 1	Autumn 2	Spring 1	Spring 2	Summer 1	Summer 2
Nursery	Why do you love me so much?	Where does snow go?	Why do leaves go crispy?	How high can I jump?	Are eggs alive?	How many pebbles on the beach?
Reception	Do you want to be friends?	Why do squirrels hide their nuts?	Are carrots orange?	What happens when I fall asleep?	Who lives in a rock pool?	Are we there yet?
Year 1	Moon Zoom	Bright lights, big city Companion: Taxi	Paws, daws and whiskers Companion: What can our hands do?	Childhood Companion: Funny faces and fabulous features	Splendid Skies Companion: Are all leaves the same?	School days Companion: Street view
Year 2	The scented garden	Coastline Companions: Will it degrade? Beach hut	Wriggle and Crawl Companion: Where do snails live?	Beat, band, boogie.	Movers and Shakers Companions: Can you make a paper bridge? How do germs spread? Still life.	Magnificent Monarchs Companion: Portrait and poses.
Year 3	Urban pioneers	Predator Companion: What are flowers for?	Rocks, relics and rumbles. Companion: Ammonite	Through the ages. Companion: Prehistoric pots	Mighty metals	Emperors and empires Companion: Mosaic masters
Year 4	Blue Abyss	Burps, bottoms and bile Companions: How do smells get up your nose? What is spit for?	Playlist Companions: What conducts electricity? Can you make a circuit from playdough? How do plugs work?	Traders and raiders.	Misty mountain, winding river Companion: Vista	I am warrior
Year 5	Pharachs	Time traveller	Star gazers Companions: How do levers help us? How does the moon move? How do rockets lift off? Why are zip wires so fast?	Alchemy Island	Sow, Crow and farm Eat the seasons.	Off with her head
Year 6	Frozen Kingdom Companions: Why are things classified? Inuit	Blood heart	Darwin's Delights	Tomorrows World	Hola Mexico	A child's war Companion: Can you send a coded message?

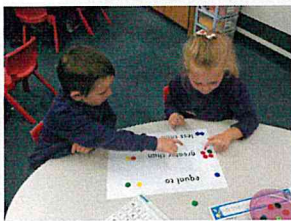
Wednesday, 14th October 2020



Bushbury Lane Academy Newsletter



Website: www.bushburylaneacademy.co.uk Email: office@bushburylaneacademy.co.uk Tel: 01902 556 486



**Bushbury learners
busy at work**





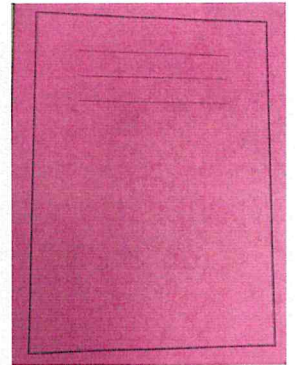
Bushbury Lane Academy Newsletter



Website: www.bushburylaneacademy.co.uk Email: office@bushburylaneacademy.co.uk Tel: 01902 556 486

Homework

We believe that homework is key to developing children's independent learning skills; developing organisational skills and self discipline as well as providing the opportunity for parents/carers to be directly involved in their child's learning. This year, children from Y1 to Y6 will be provided with weekly homework, that they will bring home in their pink A3 homework books. Each child will bring home their homework books on a Thursday and will be expected to bring their home work books back to school by the following Wednesday so that it can be acknowledged and checked by their class teacher. Homework set by teachers will reflect the learning taught in class and will allow the opportunity for the children to apply what they have learnt independently.



KS1- Children will be provided with a piece of Maths or English homework, this will be rotated between weekly.

KS2- Children will be provided with a piece of Maths and English homework each week.

Spelling

We are using Read, Write Inc to teach spelling across school. For Reception and Year 1 children, spelling forms part of their daily RWI phonic lessons, which teaches children to read accurately and fluently with good comprehension, learn to form letters, spell correctly and compose their ideas for writing step by step.

For Years 2 to Year 6, spelling is taught discretely using the RWI spelling program. During spelling lessons, children are explicitly taught spelling rules as well as statutory words matched to their year group's objectives, through a range of exciting activities. To consolidate the children's learning from this program, we have introduced green spelling books, which the children will bring home every Monday with 12 spelling words in to practice at home. Space below the spelling list can be used by the children to practice their spelling words. The children will be tested on their spelling words every Monday before being introduced to the next spelling rule and children's progress in spelling will be tracked and individual needs identified.

Currently this is in place for Y2 to Y6, but will be introduced to Year 1 after half term.



This is the book that the children will be bringing their spelling words home in.

This is the spelling book that Y2-Y6 children use in their lessons.



Reading

Children are encouraged to read at home with an adult every night. They will be provided with books weekly that are suited to their ability. Parents are asked to sign the children's diaries to inform the class teacher about their reading at home. All children have a weekly slot in their diary to visit the school library bus.



Bushbury Lane Academy Newsletter



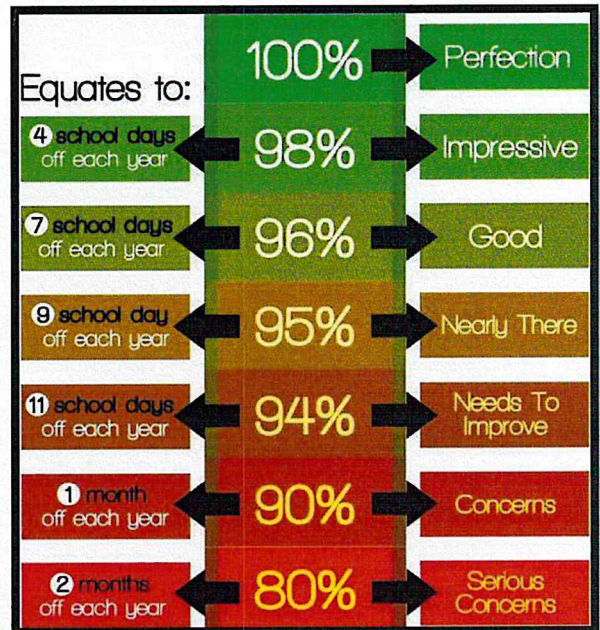
Website: www.bushburylaneacademy.co.uk Email: office@bushburylaneacademy.co.uk Tel: 01902 556 486

Attendance

We understand that some absences during the school year at this unprecedented time can not be helped, however, we find the need to stress to all our parents the importance of your child being at school every day if they are fit and well. Excellent attendance at school is crucial if your child is to achieve his/ her very best potential. We do not authorise absence during the school term, unless in exceptional circumstances. I would therefore seek your full support in aiming for your child to have 100% attendance during his/ her time at Bushbury Lane.

Punctuality

We are thankful to those of our parents who get their children to school on time daily but are alarmed at the number of children arriving to school late every morning and need your support to help this improve. Please see below the significant amount of learning that your children are missing out on. For example, in Year 1—6, we start the school day with our spelling programme. If your child misses the first 15 minutes of school daily, they will never have spelling delivered to them at Bushbury Lane. Your child deserve to access these lessons.



Drop Off and Pick Up Time Reminders

Year Group	Drop Off	Pick Up
Nursery	9.00am	11.45am
Reception	9.00am	3.10pm
Year 1, 2 and 3	8.50am	3.20pm
Year 4, 5, and 6	8.40am	3.30pm

Getting Your Child to School Really Matters



Did You Know... ?

In a School Year, If Your Child is Late Every Day By... Your Child Would Have Lost Approximately... or They Would Have Missed Approximately...

5 Minutes	3.5 Days from School	20 Lessons
10 Minutes	7 Days from School	41 Lessons
15 Minutes	10 Days from School	55 Lessons
20 Minutes	14.5 Days from School	82 Lessons
30 Minutes	22 Days from School	123 Lessons

Please Encourage Punctuality to Maintain Attendance



Bushbury Lane Academy Newsletter



Website: www.bushburylaneacademy.co.uk Email: office@bushburylaneacademy.co.uk Tel: 01902 556 486

General Reminders/ Messages

Bikes/ Scooters

We encourage as many parents and children to cycle to school as possible as this is an excellent form of exercise for our families, however, we must remind all that for health and safety reasons, no adults or children are permitted to cycle whilst on the site. We have a very busy playground and the children's safety is our first priority. Children must park their bikes up in between the first and second gate before entering the playground and parents must get off their bikes and walk from the gate with own bike and children.



How to wear a face covering

We are asking parents again to follow government guidelines and to not send children to school in face masks at present (unless medical needs say otherwise). Following government guidance, very few of our children are wearing facemasks and this continues to be the current advice. However, for those who are, we are becoming significantly concerned with some who are wearing the same mask daily. It is particularly hard for children to follow the guidelines set out below and face masks can be very unhygienic in school because the children are handling them all the time. Children are wearing and removing face coverings in school without following these steps. *Please note the information below taken directly from the gov.uk website regarding the wearing of face masks.*



When wearing a face covering you should:

- wash your hands thoroughly with soap and water for 20 seconds or use hand sanitiser before putting a face covering on
- avoid wearing on your neck or forehead
- avoid touching the part of the face covering in contact with your mouth and nose, as it could be contaminated with the virus
- change the face covering if it becomes damp or if you've touched it
- avoid taking it off and putting it back on a lot in quick succession (for example, when leaving and entering shops on a high street)

When removing a face covering:

- wash your hands thoroughly with soap and water for 20 seconds or use hand sanitiser before removing
- only handle the straps, ties or clips
- do not give it to someone else to use
- if single-use, dispose of it carefully in a residual waste bin and do not recycle
- if reusable, wash it in line with manufacturer's instructions at the highest temperature appropriate for the fabric
- wash your hands thoroughly with soap and water for 20 seconds or use hand sanitiser once removed

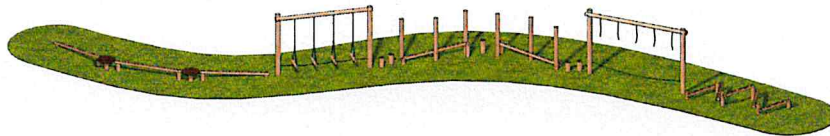


Bushbury Lane Academy Newsletter



Website: www.bushburylaneacademy.co.uk Email: office@bushburylaneacademy.co.uk Tel: 01902 556 486

General Reminders/ Messages



Playground rules at drop off and collection times

Please note that children are not to use the trim trail in the mornings and upon collection. Staff will not be supervising these areas before and after school and parents are asked to please keep children off the equipment for their safety. This also supports us with our cleaning regime for cross contamination of bubbles.

School Parliament

One of the first tasks of the school year is to elect a new School Parliament. Bushbury Lane School Parliament will meet fortnightly to discuss how we could make the school a better place for the children. They will help to make some important decisions around the school.



Each class will choose two representatives for School Parliament, this year we will have 14 representatives from Early Years to Y6. Candidates will give a short speech to their class to convince them why they should be elected. Electing a School Parliament Member is most children's first experience of democracy, we introduce the children to how the country uses a Parliament and how the people of Great Britain influence the laws of this country. Our results will be revealed in our next news letter and we will be proud to introduce our School Parliament for 2020-2021.

School Captains



Next week Year 6 children will have an opportunity to present to the rest of the school the reasons why they would like to be one of our two school captains this year. This is a great chance for pupils to hold a position of responsibility and the chance to help with a lot of important jobs throughout the year. The whole school will then vote for

who they think will do the best job and our 2020/21 School Captains will be announced in our next newsletter. We wish all candidates the very best of luck and look forward to their contribution to the school throughout the year.



We are delighted to announce that we have a new Twitter page. Please follow us on twitter to keep up to date with all the fun and learning happening in our school.



Bushbury Academy
@AcademyBushbury



Bushbury Lane Academy Newsletter

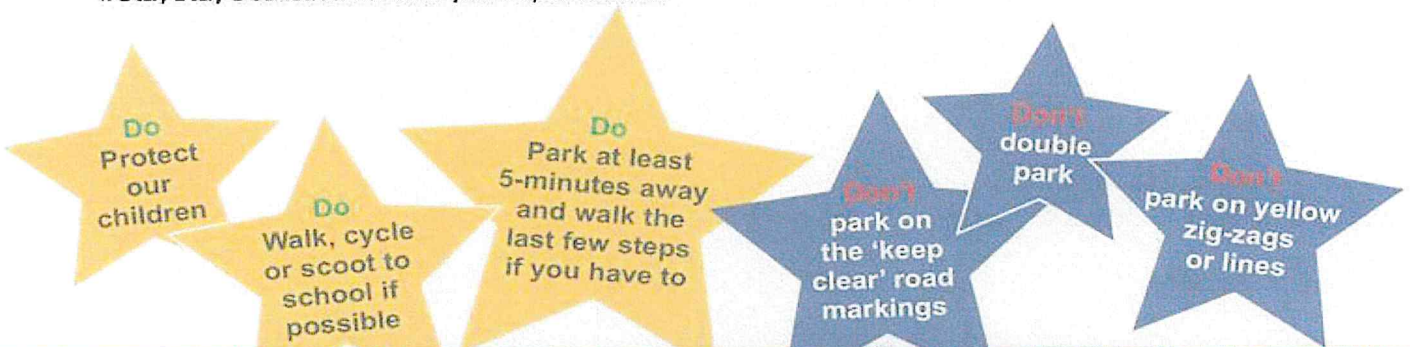


Website: www.bushburylaneacademy.co.uk Email: office@bushburylaneacademy.co.uk Tel: 01902 556 486

5 Minute Walking Bubble

The area outside our school is busy in the morning and at the end of the school day. Some drivers park irresponsibly, potentially placing children in danger. Please help create a 5-minute protective Walking Bubble around our school so that everyone can travel safely and actively to school.

By completing and returning the tear off slip below, you are committing to protecting the lives of all the children and families who attend our school. Your example will encourage other parents to also #StayStayGetActive on their journey to school.



For more hints, tips and information please visit www.modeshiftstars.org/staysafegetactive
This 5-minute walking zone represents a distance of 400m measured as a straight line, based upon an average walking speed of 3-miles per hour

