



Bushbury Lane Academy Newsletter



Website: www.bushburylaneacademy.co.uk Email: office@bushburylaneacademy.co.uk Tel: 01902 556 486



A note from Miss Turner...

Wow! What a year it has been at Bushbury Lane Academy.

It has been filled with exceptional opportunities for learning both in and out of the classroom and as always, our pupils have shone academically and personally. We couldn't be prouder of each and every one of them and we know that the future looks very bright for the pupils here.

We have been so fortunate to have been allowed to embark on trips and visits again this academic year and our pupils have thoroughly enjoyed getting out into the community and experiencing an extra layer to their learning.

Thank you to all our wonderful parents and carers for your continued support this year, this does not go un-noticed.

We are delighted to have Miss Smith back and are very much looking forward to Bushbury's next chapter, but for now, we hope that all of our children and families have a wonderful summer break!

Please stay safe and we look forward to seeing all pupils back in school on Wednesday 7th September!



Bushbury Lane Academy Newsletter

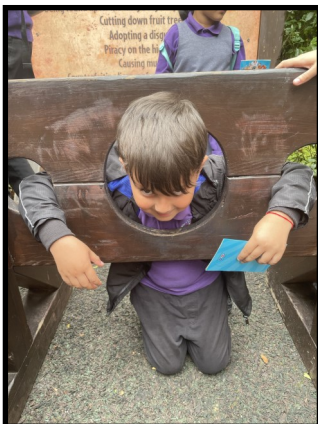
Important Dates for your Diary:

Monday 5th September 2022	INSET Day—School Closed to children
Tuesday 6th September 2022	INSET Day—School Closed to children
Wednesday 7th September 2022	Children return to school
Friday 21st October 2022	Children break up for half term
<i>Monday 24th Oct—Friday 28th Oct</i>	<i>HALF TERM HOLIDAY</i>
Monday 14th November 2022	Fluenz Vaccinations
Friday 16th December 2022	Children Break up for Christmas Holidays
<i>Monday 19th Dec—Monday 2nd Jan 2023</i>	<i>CHRISTMAS HOLIDAY</i>
Tuesday 3rd January 2023	Children return to school
Friday 17th February 2023	Children break up for half term
<i>Monday 20th Feb—Friday 24th Feb 2023</i>	<i>HALF TERM HOLIDAY</i>
Monday 27th February 2023	Children return to school
Friday 31st March 2023	Children break up for Easter Holidays
<i>Monday 3rd April—Friday 14th April 2023</i>	<i>EASTER HOLIDAY</i>
Monday 17th April 2023	Children return to school
Friday 26th May 2023	Children break up for half term
<i>Monday 29TH May —Friday 2nd June 2023</i>	<i>HALF TERM HOLIDAY</i>
Monday 5th June 2023	Children return to school
Tuesday 25th July 2023	Children break up for Summer Holidays



Bushbury Lane Academy Newsletter

Year 2 recently went on a fantastic trip to Warwick Castle





Bushbury Lane Academy Newsletter

We recently held the Grand Opening of our new Early Years Role Play Village. Visitors from the local Fire and Police Service and our School Nursing Team came along to help make the occasion a huge success!





Bushbury Lane Academy Newsletter

Our Year 6 Leavers enjoyed their Prom on Thursday 14th July. They had burgers and fries and danced the night away; What a brilliant evening!





Bushbury Lane Academy Newsletter

On 6/7/22 year 3 visited the Botanical Gardens in Birmingham to look at the exotic plants and meet some amazing animals! They got to meet a bearded dragon, a tenrec and a huge hissing cockroach! They saw lots of amazing plants and flowers as well as amazing parrots, peacocks and love birds.





Bushbury Lane Academy

Newsletter

News and Important Updates:

Important—Leave During Term Time

Government guidelines state that from September 2022, all schools must issue parents with penalty notices if their child/children have holiday/leave of 5 days or more during term time.

We will therefore be referring any leave of absences to the Local Authority for penalty notices for any holiday/leave absences from September 2022.

Please ensure you book all leave and holidays during the school holidays to avoid penalty notices being issued to you. Thank you for your co-operation with this.

Staff Structure from September 2022

Year	Class Teacher	Teaching Assistant/Support Staff
Nursery	Mrs McCall	Miss Allen, Mrs Rogers
Reception	Miss Peck	Mrs Rogers, Miss Healy, Miss Allen
Year 1	Miss Lathe	Mrs Patino
Year 2	Mrs Mukanga	Miss Hill, Miss Lal
Year 3	Miss Cross	Miss Bunsie, Mrs Tongue
Year 4	Miss Roberts (New Teacher)	Mrs Deegan
Year 5	Mr Morgan (New Teacher)	Mrs Padmore
Year 6	Miss Walters	Mrs Allen, Miss Lal

Miss Hood will be leaving to take up a position as Deputy Principal in another primary school, and Mr Crockett and Mr Starr will both be leaving us to take up teaching positions in other primary schools in Wolverhampton. They will be sadly missed, but we're sure you will join us in wishing them lots of luck in their future careers.

We will also be saying goodbye to Mrs Hadley, who has been our Executive Head Teacher while Miss Smith has been away on Maternity Leave. We would like to thank her for looking after us and wish her all the best, and we look forward to seeing her again when she gets chance to come back and say "Hello"!

We will be saying a big "Welcome Back" to Miss Smith who will be returning as our Head Teacher full time from September, and we are very pleased to announce that Miss Turner has accepted a new position as Deputy Head Teacher of Bushbury Lane Academy. This will be a non-teaching role, but she will still be seen every day around school!

Finally, we would like everyone to give a warm welcome to two new staff members joining us in September: Miss Roberts, who will be teaching in Year 4 and Mr Morgan, who will be teaching in Year 5. We look forward to them joining the Bushbury Lane team and we are sure you will make them both feel very welcome!



Bushbury Lane Academy Newsletter

Attendance

We understand that some absences during the school year can not be helped, however, we find the need to stress to all our parents the importance of your child being at school every day if they are fit and well. Excellent attendance at school is crucial if your child is to achieve his/ her very best potential. We do not authorise absence during the school term, unless in exceptional circumstances or if sufficient medical evidence is provided. I would therefore seek your full support in aiming for your child to have 100% attendance during his/ her time at Bushbury Lane. **Please be aware that we will be sending letters out to those families where we are concerned about attendance and will have our Education Welfare Officer involved.**

Punctuality

We are thankful to those of our parents who get their children to school on time daily but are still concerned that some of our children are continuously arriving to school late every morning and need your support to help this improve. Please see below the significant amount of learning that your children are missing out on. For example, in Year 1—6, we start the school day with our spelling programme. If your child misses the first 15 minutes of school daily, they will never have spelling delivered to them at Bushbury Lane. Your child deserves to access these lessons.

Drop Off and Pick Up Time Reminders

Year Group	Drop Off	Pick Up
Nursery	8.50am (12:20pm for pm Nursery)	11.45am (3.20pm for pm Nursery)
Reception—Year 6	8.50am	3.20pm



Getting Your Child to School Really Matters



Did You Know... ?

In a School Year, If Your Child is Late Every Day By... Your Child Would Have Lost Approximately... or They Would Have Missed Approximately...

5 Minutes	3.5 Days from School	20 Lessons
10 Minutes	7 Days from School	41 Lessons
15 Minutes	10 Days from School	55 Lessons
20 Minutes	14.5 Days from School	82 Lessons
30 Minutes	22 Days from School	123 Lessons

Please Encourage Punctuality to Maintain Attendance



Bushbury Lane Academy

Newsletter

REMINDERS AND UPDATES:

Morning and End of Day

A reminder that start and finish times are as follows:

Morning Nursery: Start at 8:45am, Finish at 11:45am (30 hour children—finish at 3:20pm)

Afternoon Nursery: Start at 12:20pm, Finish at 3:20pm

Reception —Year 6: Start at 8:50am, Finish at 3:20pm

Please ensure that your child attends school every day and is on time for school every morning ready to start learning. It is also just as important that you are on time collecting them at the end of the day. It can be very upsetting for children if parents are not there to collect them when they are expected to, and our teaching staff have other commitments after school so are unable to stay and look after any children who have not been collected on time.

We will still be closely monitoring all absences and late arrivals/collections. Parents will be issued with warning letters once any child's attendance reaches below our expected attendance level of 95%. We will also be implementing a charge for late collections as per the letter sent to all parents on 17th November.

Illness

If your child is too ill to attend school, please ensure that you inform us by phoning the school office before 9.15am on each day of illness.

If your child has sickness or diarrhoea, they cannot return to school until they have had 48 hours clear from the last episode of any vomiting or diarrhoea.

A reminder that your child should **NOT** have medication of any type in school with them. If your child needs to have any medicine whilst at school, you must sign it in at the school office and it will be kept safe until your child needs to have it administered. Please note that we can only administer prescribed medication. If you wish to come into school to give your child any other medication, please contact the school office.

PE Days

All children will have a PE lesson each week as follows. The lessons will be led by our Sports Coaches from Soccer 2000.

In addition to their set PE lessons, classes will also have other PE activities throughout each week so **please ensure that every child brings their PE kit in each Monday morning and takes it home for washing each Friday.**

ALL pupils will need to follow the school's PE uniform requirements. This will be monitored closely and you will be informed if your child is not in the correct PE kit. Children who are not wearing the correct kit or unsuitable kit will not be allowed to take part in the lessons for health and safety reasons.

PE Kit for Boys and Girls is as follows:

- Purple or white tee shirt (plain or school logo)
- Plain black shorts/plain black jogging bottoms
- Plain black or purple sweatshirt/hoodie (purple hoodies with school logo are available to buy from Trutex)
- Black pumps/trainers

(Please note: Children should not be wearing named brand items (eg: Nike, Adidas etc))

******Don't forget to label all uniform with your child's name!******



Bushbury Lane Academy

Newsletter

REMINDERS AND UPDATES

It is our expectation that all children come to school in the correct uniform. If any children are not wearing their full, correct uniform, we will be contacting parents.

A reminder of uniform requirements is below:

Girls

Grey/black skirt or trousers (No Leggings or Jeans)
Purple polo shirt (with logo)
Purple sweatshirt/cardigan (with logo)
Black shoes (No trainers)
Purple and white gingham dress for summer

Boys

Grey/black trousers (No Jeans)
Purple polo shirt (with logo)
Purple sweatshirt (with logo)
Black shoes (No trainers)

A warm coat and hat, scarf and gloves will also be required for the Winter months.

The logo items can be purchased from the Trutex Crested Schoolwear shop in Wolverhampton town centre.

Tel: 01902 593030 (Opening hours 9:30am—5.00pm, Mon-Sat) or online at www.crestedschoolwear.co.uk

****Pre-loved uniform donations are always welcome! Please bring any donations to the School Office****

Parking

Please do not drive up in front of the school to collect/bring children, including collecting children from Nursery at 11:45am. This area is for staff and authorised visitors only.

Please ensure that you park safely and considerately on Ripon Road or Bushbury Lane, and walk in to the school premises. Thank you for your co-operation with this.

Facebook

Please find us online, if you haven't done so already, to see some of the amazing things happening at Bushbury Lane. If you haven't already filled in the paperwork, please contact the office to let them know that you consent to photographs of your child being shared on our social media page. To find us search: Bushbury Lane Primary Academy

If this doesn't work, enter the following link into Google.

<https://www.facebook.com/BushburyLanePrimaryAcademy>



After School Club

Our After School Childcare Club is available at a cost of just £6.00 per session. The session starts when the school bell rings at 3:20pm and finishes at 5.15pm. There will be a small snack and drink provided to the children daily.

Due to staffing numbers and for health and safety reasons, children will not be able to attend if you haven't booked and paid for the place in advance. This can be done up until the morning of the day you wish your child to attend.

If you claim help with childcare fees, our School URN is **142823**. More information about this can be found here: <https://www.childcarechoices.gov.uk/>

If you would like to book your child/children into the club, you can now book and pay for sessions via your Arbor account. If you need your log in details re-sending to you, please ask at the school office.

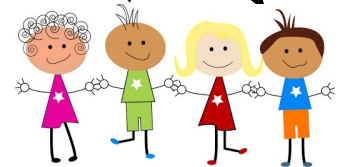
Are you looking for a Nursery place now or from September ? We still have some spaces and would love to have you join us.



Do you want an inspirational experience for your child in an exciting, vibrant environment?

Please pop along to our school office for more information or call 01902 556486

Interested in a current Reception or Nursery place, call to arrange a viewing ASAP.



[Useful Information/Links](#)

[Support for Families During School Holidays:](#)

Letters containing HAF codes were sent by the HAF team last month to eligible children and young people (aged 5 to 16 years). If a parent hasn't received / has lost their child's HAF code, they will need to email the HAF team (haf@wolverhampton.gov.uk) with the relevant information (i.e. child's name, date of birth, school name, home address and which criteria they're applying under – i.e. FSM / EHCP).

Information about events and support for children and young people across the City of Wolverhampton is available at www.yowolves.co.uk and this is being regularly updated. Parents will need to provide their HAF code when they book their child's place with their chosen activity provider.

There is additional / alternative help available through the [Household Support Fund](#) and other community-based resources (e.g. food banks, strengthening families hubs, etc); You may already have received information about this from the team/s overseeing this support.

As you may already have seen, the email address for HAF, contact details for the Stay Safe Be Kind team and links to other sources of support and advice are our FSM information page:

www.wolverhampton.gov.uk/freeschoolmeals – feel free to share this information with your parents/carers:

Support and information is available for all residents of the City of Wolverhampton:

[Household Support Fund](#)

[Stay Safe Be Kind](#)

[Money Helper Service](#)

[Citizens Advice](#)

[Yo Wolves](#)

If you urgently need help with providing food for your child/ren, please contact your child/ren's school/s, email staysafebekind@wolverhampton.gov.uk or call the Stay Safe Be Kind helpline on 01902 290241 (during office hours, Mondays to Fridays, excluding Bank Holidays) to discuss your circumstances in confidence.

For up-to-date information about food banks (some of which require a referral from school or other agency as appropriate), please visit: <https://www.wolverhampton.gov.uk/benefits/social-security-benefits/food-banks-and-soup-kitchens>

[Help and advice if you are struggling with your energy bills](#)

<https://www.moneysavingexpert.com/utilities/how-to-get-help-if-you-re-struggling-with-your-energy-bills/>

[Summer issue of Raring2go! Magazine](#)

If you are looking for lots of ideas of fun, active, crafty and educational things to do and local places to go as a family this summer please take a look at the latest issue of Raring2go! Wolverhampton & South Staffordshire magazine by following this link: magazines.raring2go.co.uk/wolverhampton/summer2022/

[30 Hour Nursery Place Eligibility](#)

Nursery parents may be eligible for an additional free 15 hours Nursery place. More information can be found here: <https://www.gov.uk/apply-30-hours-free-tax-free-childcare>. If you are eligible, please let us know as soon as possible as we will need the code given to you in order for you to access your free places.

Add Gloucester Street Information Here